

The Brookline Schools Healthy Breakfast & Lunch Program



DRAFT 2.25.19

Tonight's Discussion

- The Brookline Schools Breakfast & Lunch Program
- Our Vision
- Key Events - Timeline
- Brookline's Program – Healthy Eating Together

The Brookline Schools Program

Offer Breakfast and Lunch at 11 Locations

- Management Team (menu, recipes, operations)
 - Assistant Director and Secretary (Town employees)
 - Whitson's Food Services (Outside vendor – director, procurement)
- Kitchen staff and Managers (prepare and sell food)
 - Town employees (35 positions)
- School committee (set policy)

Picture of “lunch ladies”!

Our Vision

Strong Healthy Kids. Eating Well Together.

Serving up healthy and delicious foods at school to power all our kids with the nutrients and calories they need to thrive.

Healthy



Appealing

Accessible to all

Our Current Situation

- School lunch program runs at a deficit
- Revenue has not matched expenses (5-6 years)
- We can change that, but we need to reach our goals for number of meals sold

Variability by School

Lunch																
Average Meals Sold Per Day																
School	Sept	Oct	Nov	Dec	Jan	Feb	Mar	April	May	June	YTD Avg	Budget	Variance	Enrollment	% Served	17-18
High	880	862	850	796	737						825	882	-57	2101	39.3%	817
Baker	210	227	240	242	232						230	277	-47	785	29.3%	268
Coolidge	278	300	323	326	331						312	298	14	916	34.0%	306
Heath	124	133	150	143	145						139	154	-15	571	24.3%	156
Runkle	201	220	230	229	229						222	241	-19	622	35.7%	252
Lawerence	181	201	199	202	206						198	235	-37	724	27.3%	228
Driscoll	227	266	281	281	290						269	282	-13	618	43.5%	275
Pierce	231	258	292	282	282						269	263	6	914	29.4%	268
St Marys	50	61	65	65	68						62	57	5	311	19.9%	57
Lincoln	183	197	215	208	208						202	227	-25	605	33.4%	224
TOTAL	2565	2725	2845	2774	2728	0	0	0	0	0	2727	2916	-189	8496	31.1%	2851

FY19 Budget based on FY18 experience with first year with FSMC Director

Budget has \$92k Subsidy from General Fund

Self funding would be approximately 3,200 to 3,400 average meals sold per day or 40 -42+% participation

Variability by School

MPLH (Meals Per Labor Hour)

MPLH - Includes Breakfasts, Lunches, Adult Meals, and a conversion for A la Carte items

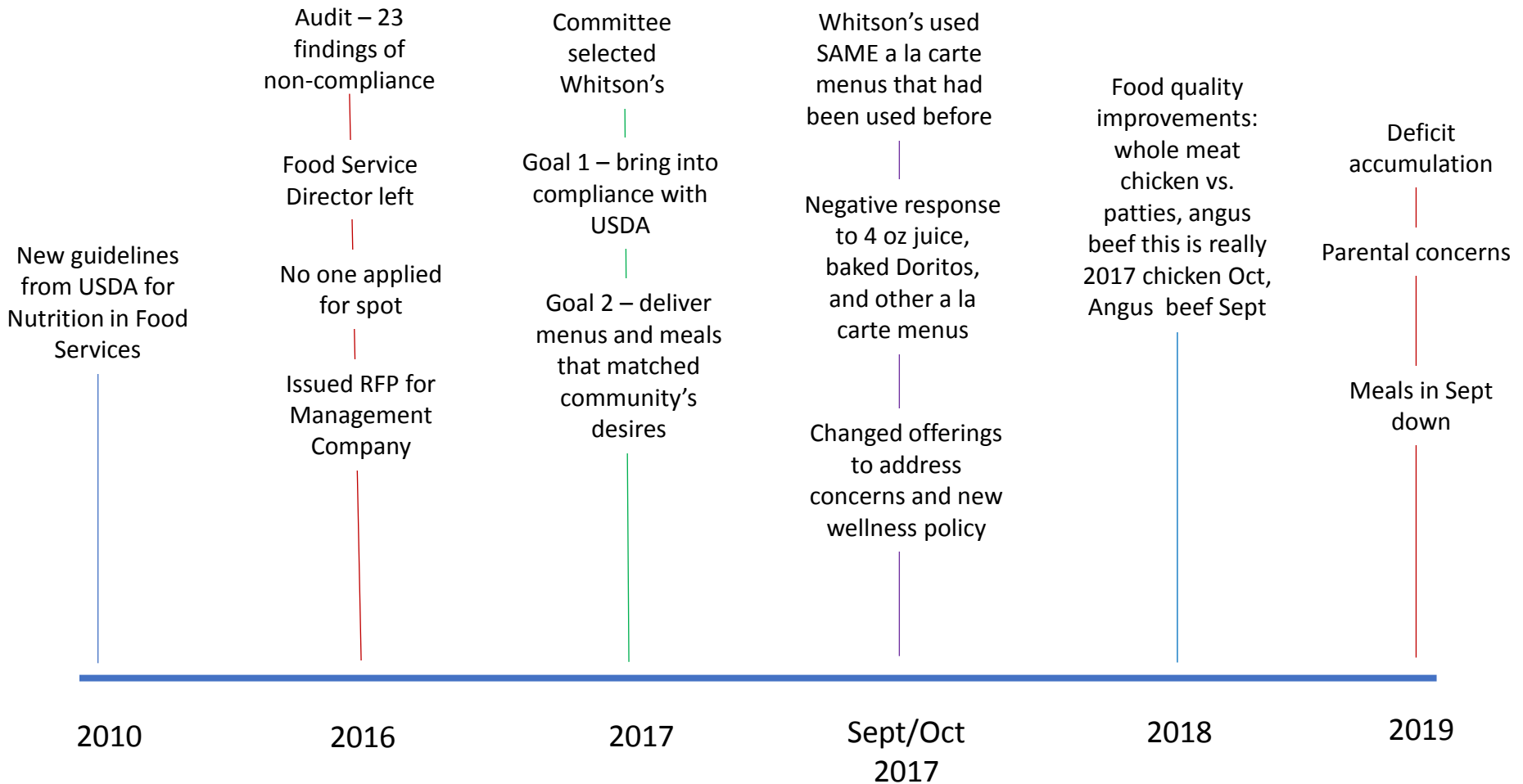
MPLH in high teens tends to lead to a self-funding program in the school food services program

MPLH		Average	Through		
School	Tot Meals	Std Hrs	January		
			MPLH		
High	1185	75	15.8		
Baker	275	18	15.3		
Coolidge	368	29	12.7		
Heath	174	13	13.4		
Runkle	269	18	15.0		
Lawerence	250	17	14.7		
Driscoll	298	18	16.6		
Pierce	325	23	16.8	Includes St. Marys	
St Marys	62	0	0.0		
Lincoln	244	18	13.6		
Total Daily	3450	229	13.4		

Contributing Factors

- Negative perceptions around school food
 - Variety, quality, appeal and taste
 - Nutrition (too healthy, not healthy enough)
- Low cost of breakfast and lunch
 - Breakfast: \$2.00
 - Lunch: \$3.25
- Town initiatives
 - Composting, green packaging (hard to see the food), local sourcing
- Lunch realities
 - 20 minutes for lunch, lines, infrastructure limitations
 - K-8 (younger kids require more help)

Key Events – Timeline



Our Ask – Support The Program



TWO For TWO

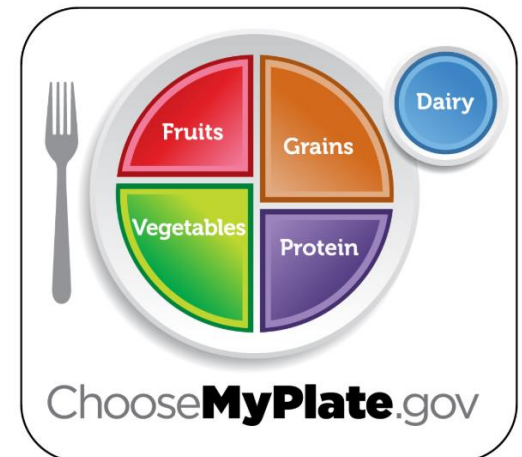
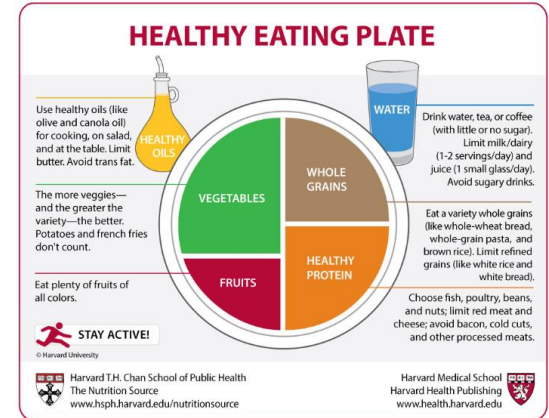
TWO more breakfasts a week

TWO more lunches a week

Look at the menu on Sunday and talk with your kids
Help them choose the days and items

Our Guarantee – Healthy

- Individual foods chosen adhere to:
 - Federal nutrition guidelines
 - Harvard Healthy Eating Plate
- Our task force reviews and approves **ALL** items
 - Nutritionists and Dieticians that live in Brookline



Our Guarantee – Variety for ALL

Daily Menu

3 Salads + whole grain roll

Deli sandwiches

Whole wheat bagel lunch

Peanut butter sandwich

Pizza (Fri)

Burgers (Mon and Thur)

Warm entrees



Our Guarantee – Each Meal is Balanced

- Student chooses the main item
- Each item is surrounded by a vegetable and fruit and milk



Our Guarantee – Still HUNGRY?

- Students who received a reimbursable meal can ask for MORE vegetables and fruits (for FREE)



Our Guarantee – Appealing

- Look, taste, smell
- Evaluating and spot checking EVERY school
- You can see the results from your school at this [website](#) (need hyper link) (we do not have pictures on the web, yet)



Our Guarantee – Guidance to Choose

- Clearer menu and posters to help them decide
- Younger kids are assisted by staff in the cafeteria

Need some pictures

Questions and Discussion

Addtl Ideas (for the committee)

- Need to have sampling of foods at this event
- Need to have a contest where school's compete and win stuff
- K-8 - Sticker under the tray (every 10 or 12 trays) free (new?) a la carte item with the purchase of another reimbursable lunch later this week on Wednesday or Thursday?
- Larger question – we need to be able to confidently deliver on the guarantees we are making about the food